

## Open Field, 27cm, Clear (OFAM-01)

**Crocus** open Field apparatus is broadly used to assess exploratory behavior and validated for use in the measurement of anxiety related behaviors.

- Available for rat or mouse (mouse version pictured below).
- Available with transparent or opaque walls

## Product Info

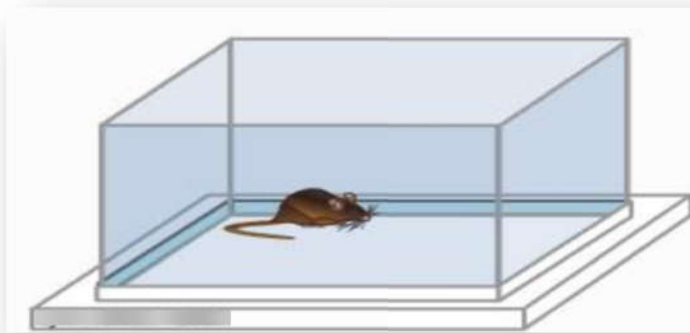
Open Field test is a popular protocol used to assess exploratory behavior and anxiety. Thigmotaxis in the open field is used to evaluate anxiolytic, anxiogenic and even non-pharmacological treatments. Ambulation is the most common behavior studied with this maze, but others such as latency or rearing can also be measured. In addition, objects can be added for a modification similar to the novel object recognition field.

- Walls can be both opaque and clear. We recommend that clear walls are used for measurements of anxiety, while opaque walls are used if assessments include novel object recognition.
- Walls are easily detachable for easy cleaning.



## Apparatus and Equipment

**Crocus** Open Field apparatus is a square arena that is available in a 27 x 27 cm and 50 x 50 cm sizes to accommodate different sized animals. The arena is surrounded by high walls to prevent the subjects from escaping the apparatus. In general, the walls are clear. However, opaque colors and matte finish are also available. Floor inserts for the apparatus are available with or without gridlines. These gridlines divide the area into equal smaller squares and can be helpful for manual scoring, as well as video recording and scoring with tracking software. A square area in the very center of the area may also be outlined.



### • Open-field Test

