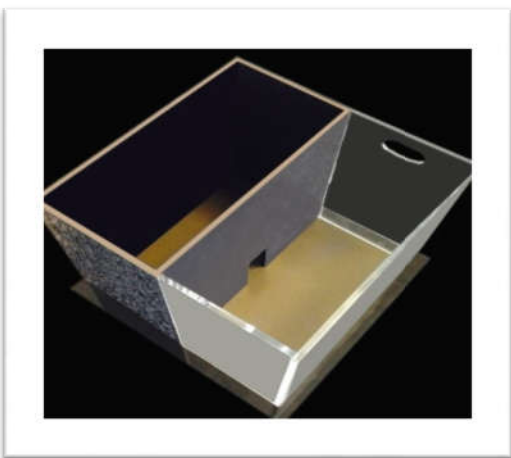


Crocus <http://www.crocusscientific.com>
Scientific Trading Tel: +92 42 35786141
 173-B Raja Center Main Market Gulberg II Lahore PAKISTAN
 E-mail: crocus.scientific@gmail.com

Light/Dark Box

Crocus Light/Dark Box is a characteristic tool used in the assessment of anxiety. The basic measure is the animal's preference for dark, enclosed places over bright, exposed places. Time spent in the lit (light) half of the arena, and the related exploratory behaviours, are reliable parameters for assessing anxiolytic effects that may be useful in identifying and/or screening of anxiolytic and antigenic agents.



Key Features Of BLACK & WHITE TEST

- a) Compartments with independent and highly contrasted illumination
- b) Easy to clean between
- c) Total time spent in each compartment latency to the first change of compartment
- d) Number of changes between the black and white compartments
- e) Total duration of the experiment
- f) Standard transparent cylinder Available in other sizes by special order

Specifications

1. Available for rat or mouse
2. Walls fit solidly in slotted base, but lift off for easy cleaning.
3. Grey, non reflective base plate.
4. CST-STA02 (D x H) 10 x 25 cm (4 x 10 in)
5. CST-STA04 (D x H) 20 x 50 cm (8 x 20 in)

Model No	CST-BW02
White Compartment	240 x 250 x 250 mm (9.5 x 9.8 x 9.8 in)
Black Compartment	240 x 250 x 160 mm (9.5 x 9.8 x 6.3 in)
Material Composition	Acrylic,

