

Crocus Scientific Trading

FORCED SWIM TEST CST-FS-03

FORCED SWIM TEST

Forced Swim" Test which is also known as the behavioral despair test, is the most commonly used test for assessment of depression in animal models. The test is commonly used to measure the effect of antidepressant drugs on behavior of new compounds, and experimental manipulations that are aimed at rendering or preventing depressive-like states. The cylinder is a straight-forward design. Sizing is importantly linked to the function of the test. The "crocus forced swim" cylinder has standard and custom size options.

We provide several different sized acrylic transparent cylinders for the forced swimming test .

FOR STUDIES ON

- * Depression
- * Antidepressants
- * Mood
- * Behavioral Despair

TECHNICAL SPECIFICATIONS

Item #	Dimensions
<u>CST-FS01</u>	10 x 25 cm (4 x 10 in)
<u>CST-FS02</u>	20 x 50 cm (8 x 20 in)
<u>CST-FS03</u>	30 x 50 cm (12 x 20 in)

All cylinders are made of acrylic.



Manufactured By : *Crocus Scientific Trading*

Sociability cage Model:CST-SC-03

Three Chamber Social Test

The apparatus also includes two removable clear acrylic sliding doors to prevent access to the side chambers, and two small acrylic cages for the introduction of the unfamiliar (stranger) mice. A small space between the chambers allows you to slip a piece of paper inside in order to prevent visual contact between the three chambers. The main principle of this test is based on the free choice by a subject mouse to spend time in any of three box's compartments during two experimental sessions: the sociability session and the social novelty session. Disruption of social behavior and social recognition are characteristics of many neuropsychiatric disorders (such as Schizophrenia, Bipolar disorders) and a noticeable symptom of neurodevelopment disorders (such as Autism).

FOR STUDIES ON:

- Autism
- Social Memory & Novelty
- Pair-bonding
- Dominance hierarchies

SPECIFICATIONS:-

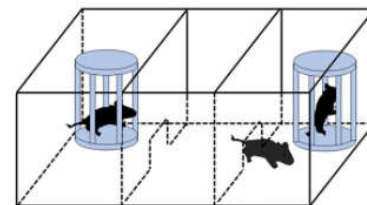
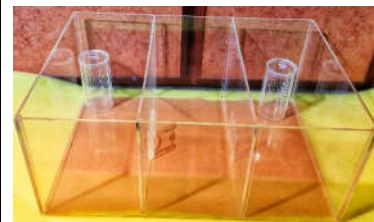
Material:Acrylic polycarbonate rectangle

Size:400x200x250mm

Dividers: (200 x 220 mm)

sliding door of about 50 x 50 mm

Manufactured By : *Crocus Scientific Trading*



We may change our design any time with out any notice

Laboratory Science Research Lab Equipment Supplier

